



GMT MONTHLY MEMBERSHIP PROGRESS REPORT

Results as of: 5/31/2019

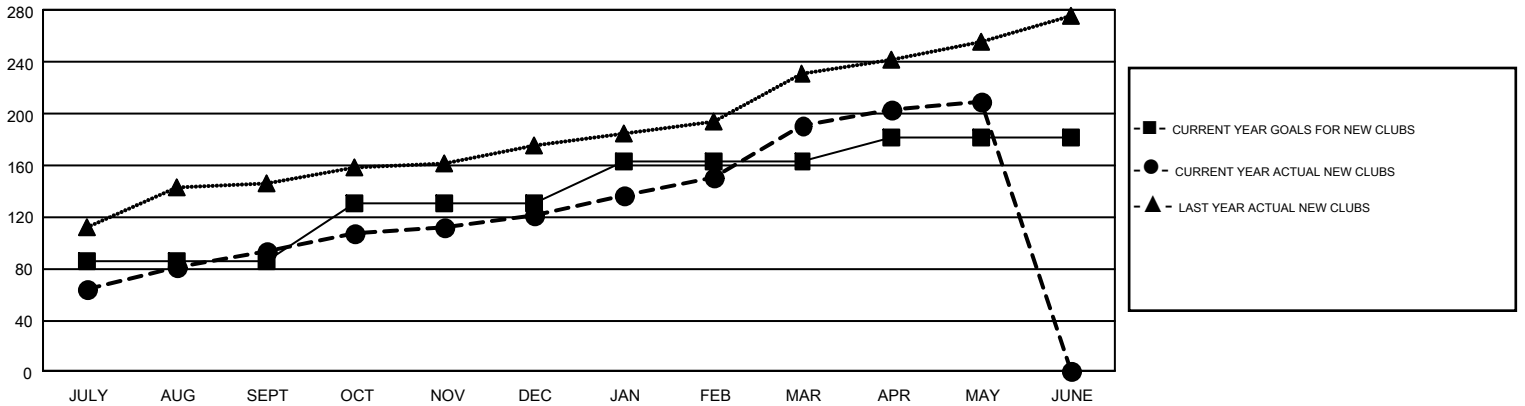
GMT Constitutional Area 6, Group A

GMT: SWADESH RANJAN SAHA

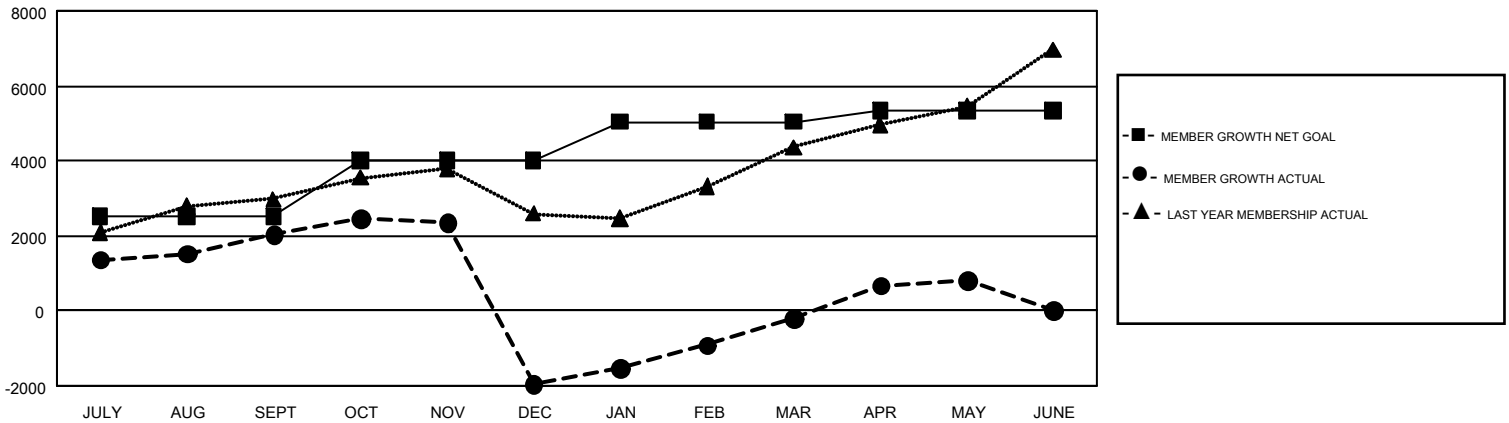
REPORT DOES NOT INCLUDE CLUBS IN UNDISTRICTED AREAS.

Clubs				Members			
RESULTS FOR 2018-2019				RESULTS FOR 2018-2019			
QUARTER	NEW CLUB GOAL	NEW CLUBS	DROPPED CLUBS	QUARTER	MEMBER GROWTH NET GOAL	MEMBER GROWTH ACTUAL	DROPPED MEMBERS ACTUAL (including transfers)
JULY/AUG/SEPT	86	94	22	JULY/AUG/SEPT	2,525	3,850	1,649
OCT/NOV/DEC	45	27	106	OCT/NOV/DEC	1,470	2,240	6,139
JAN/FEB/MAR	32	70	19	JAN/FEB/MAR	1,044	3,123	951
APR/MAY/JUNE	18	19	1	APR/MAY/JUNE	300	2,124	1,003

GOALS AND ACTUAL NEW CLUBS CUMULATIVE



GOALS AND ACTUAL MEMBERS CUMULATIVE



DROPPED CLUBS: 148	1,035 CLUBS OF 1,873 ADDED 1 OR MORE NEW MEMBERS	GENDER DISTRIBUTION MALE 42,839 (72.49%) FEMALE 16,255 (27.51%)
DROPPED MEMBERS DECEASED 116 CLUB CANCELLED 4,089 OTHER 5,538 TOTAL 9,743	CLICK HERE FOR CUMULATIVE MEMBERSHIP DATA	TOTAL FAMILY UNIT MEMBERS 26,950 FAMILY MEMBERS PAYING HALF DUES 16,517